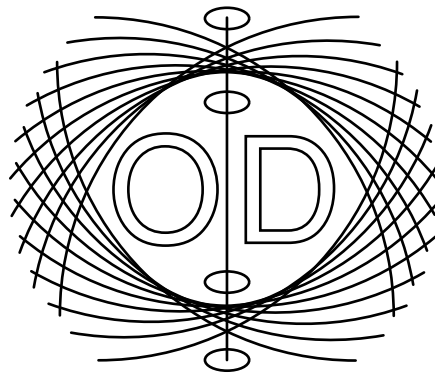
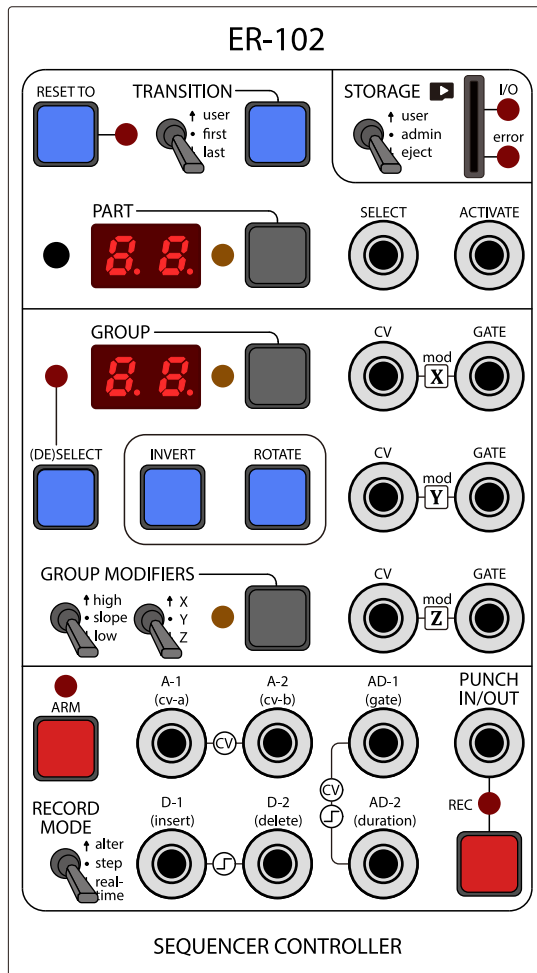


A short manual for the

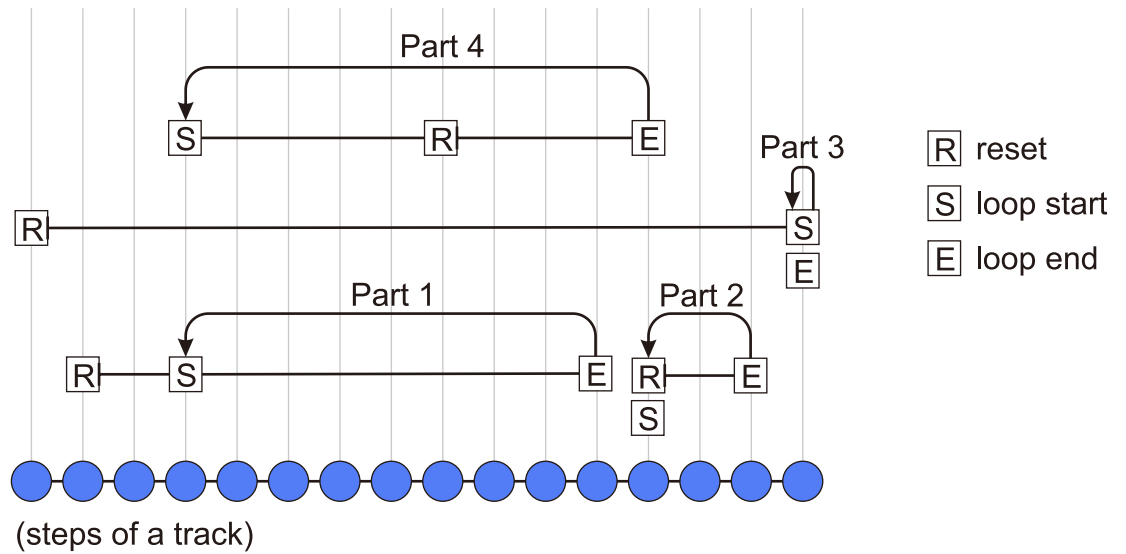
# ER-102: Sequencer Controller



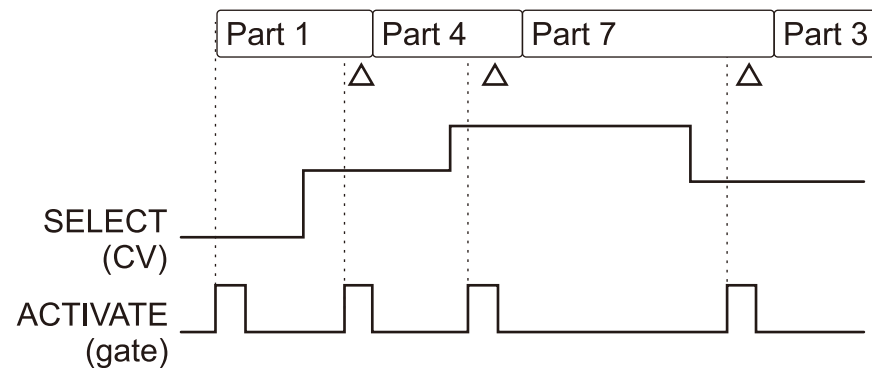
# PARTS



Define up to 99 parts...

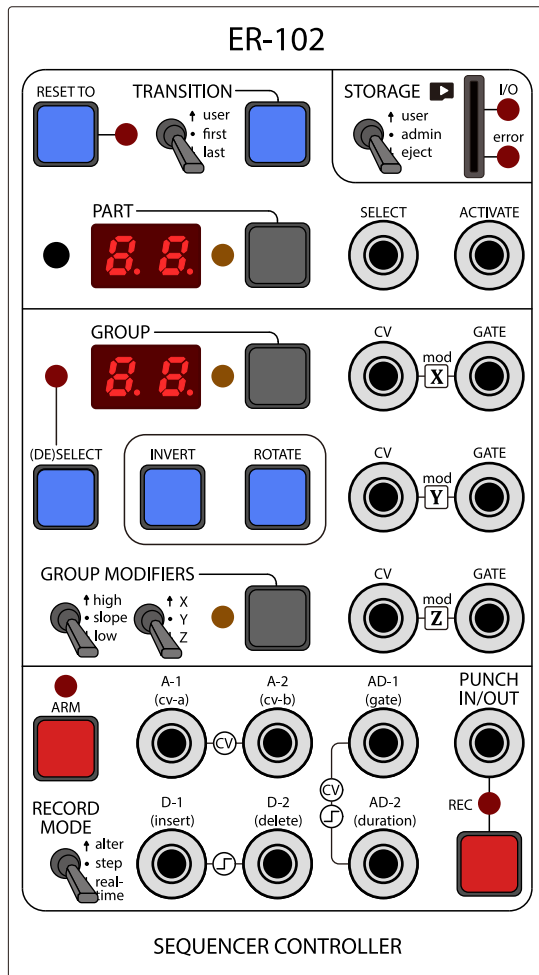


Activate parts under CV/gate control...

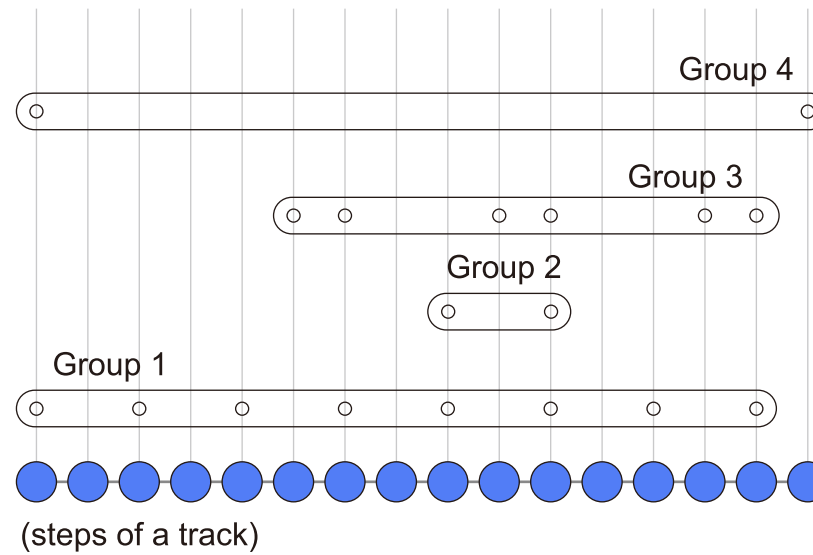


△ The TRANSITION switch chooses quantization behavior for the start of the next part.

# GROUPS



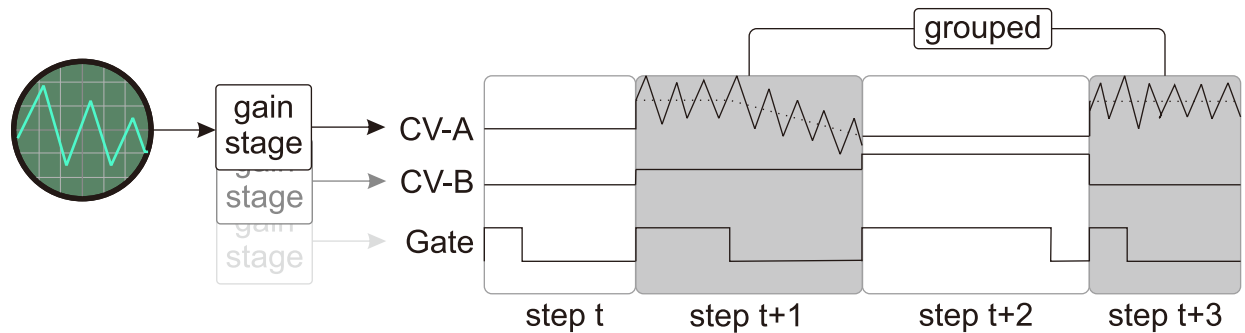
Assign steps to up to 16 groups...



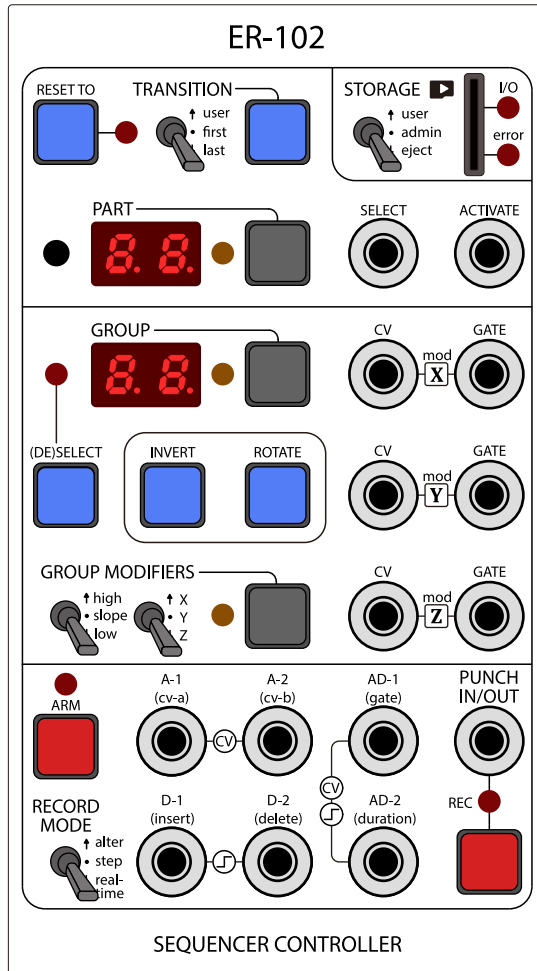
Apply transformations to groups...

$$T(\text{Group}) = \bullet T(\bullet) \bullet T(\bullet)$$

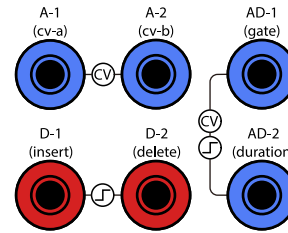
Route modulation signals to groups...



# RECORD



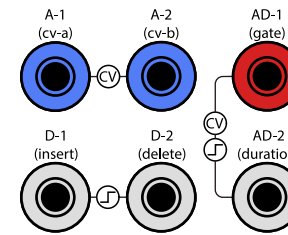
## Step record (a.k.a. remote control)



While the (insert) gate is high, continuously sample the inputs and update the last inserted step.

Trigger a step to be inserted/deleted at the edit cursor.

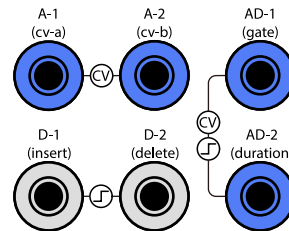
## Real-time record (with optional quantization)



These CV inputs are sampled half a clock pulse after inserting a new step.

Two consecutive rising edges determines the duration of a step. A rising edge followed by a falling edge determines the step's gate duration.

## Alter record (a.k.a. real-time overdub)



Any of the 4 step parameters of the step that is currently being played are overwritten with the sampled values present at these inputs.

\* All jacks on the ER-102 have circuitry to detect the presence or absence of a plug.